

Configuring the USB Wireless Adapter with GXV3140

1.1 How to Enable Wifi Features

1.1.1 Configuring using the web configuration interface

Type the IP address of the GXV3140 (as shown on the phone LCD screen, see figure 1-1 below) in the URL bar of a web browser to log into the web configuration interface. The user will be prompted for the login credentials. By default, the username and password are both set to admin. (See figure 1-3 below).

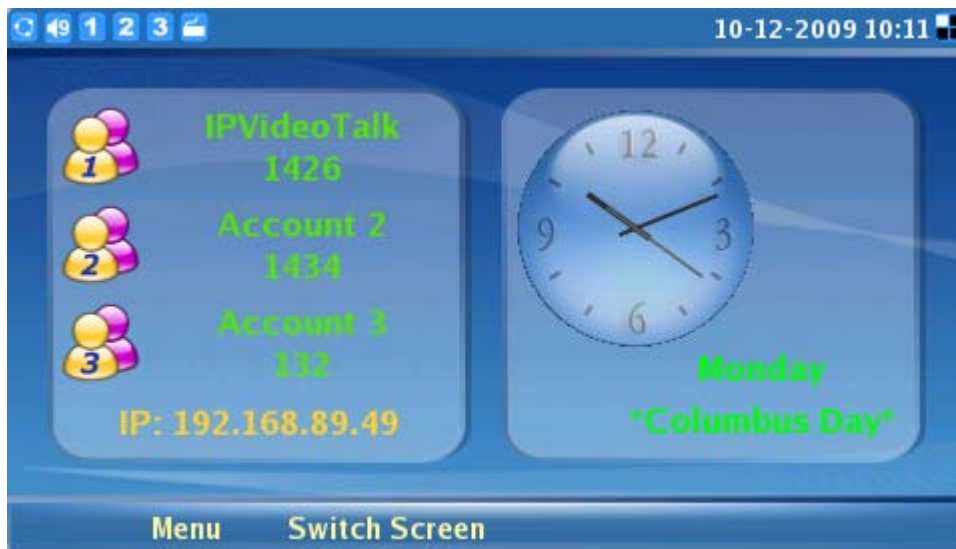


Figure 1-1

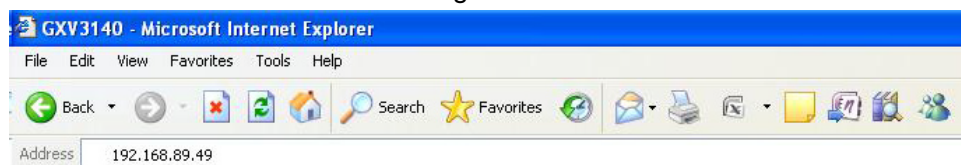


Figure 1-2

After logging into the GXV3140 Web configuration interface, click on Maintenance-> Wifi Settings. Set Wifi Function to “Enable” and click on “Save” (see figure 1-4 below).

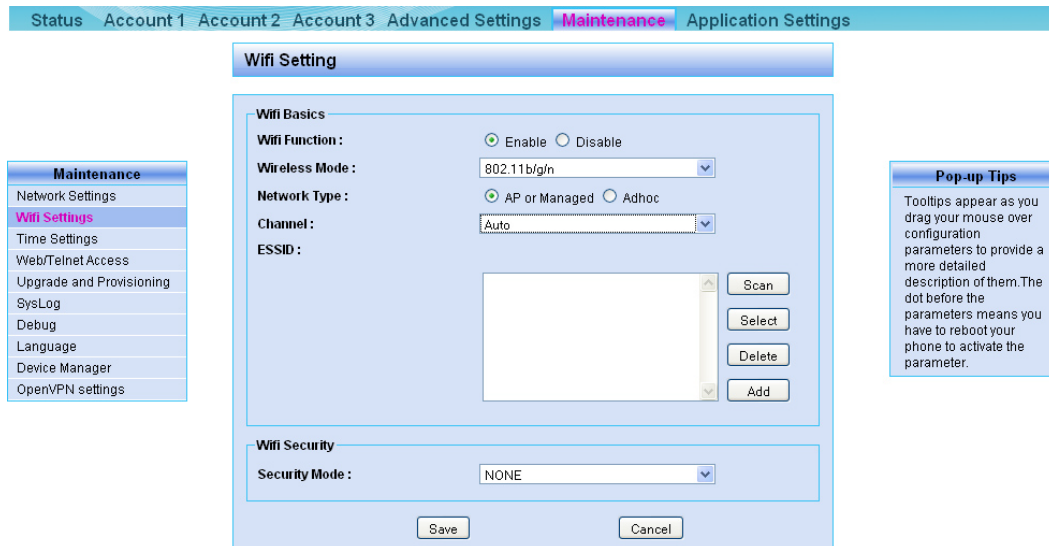


Figure 1-4

Wifi Function: The setting to enable/disable the Wifi functions. By default, Wifi functions are disabled. If users are not using the Wifi function, please leave it as the default setting.

Wireless Mode: The setting used to configure the GXV3140 wireless mode. These are the modes supported: 802.11b/g, 802.11b, 802.11g, 802.11n, 802.11g/n, 802.11 b/g/n. It is recommended to use 802.11 b/g/n.


Network Type: Select “AP or Managed” for wireless networks with access points. Select “Adhoc” if it is an ad-hoc network and there are no access points. It is recommended to use the “AP or Managed” network type if there are access points.

Note: With “AP or Managed” network type, the signals between the devices would have to go through the access point (router). With Adhoc network, the devices can send signals to other devices directly without going through the access points.

Channel: Configure the wireless signal channel based on the settings on your wireless router. If the channel setting on the wireless router is set to 6, please also select 6 for this setting.

Security Mode: Configure the security mode based on the settings on your wireless router. If the wireless router uses WEP, please also select WEP for the security mode and configure the keys.

1.1.2 Configuring using the GXV3140 keypad

Press the F1 button or the round submit button () on the GXV3140 to access the menu. Use the up/down/left/right navigation keys to navigate through the menu and select "Settings" (see figure 2-2). Select "Network" (see figure 2-3), and use the left/right arrow key to select "Wifi" (see figure 2-4). Configure the Wifi settings and press F3 to save the settings.

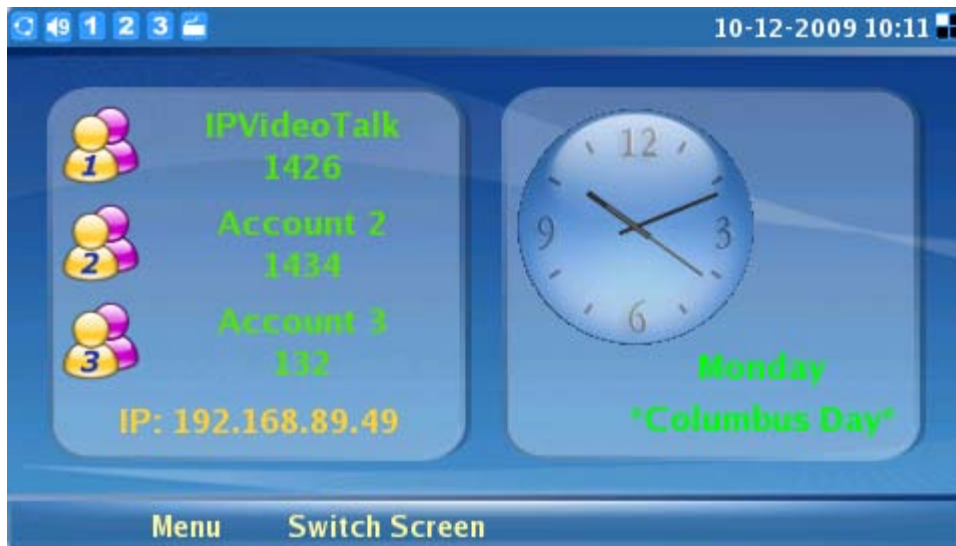


Figure 2-1

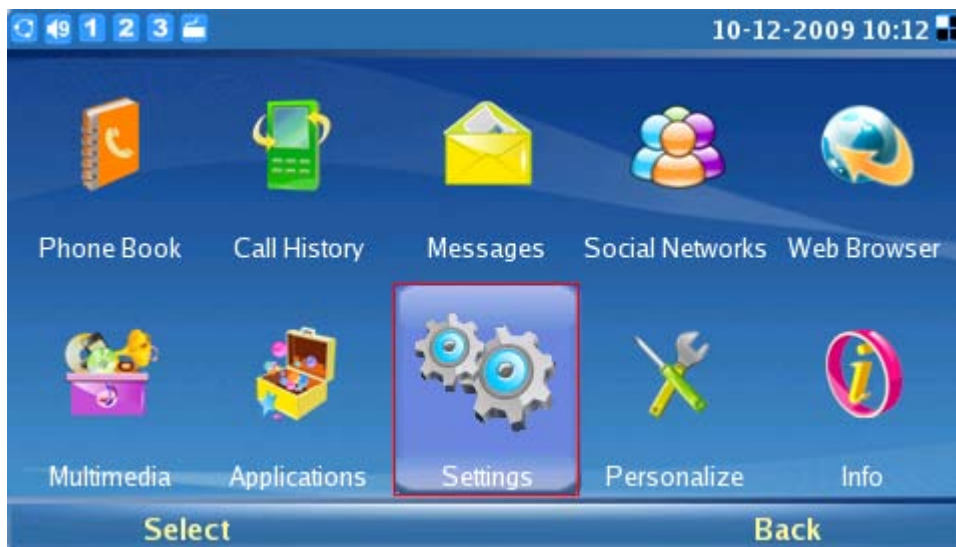


Figure 2-2



Figure 2-3

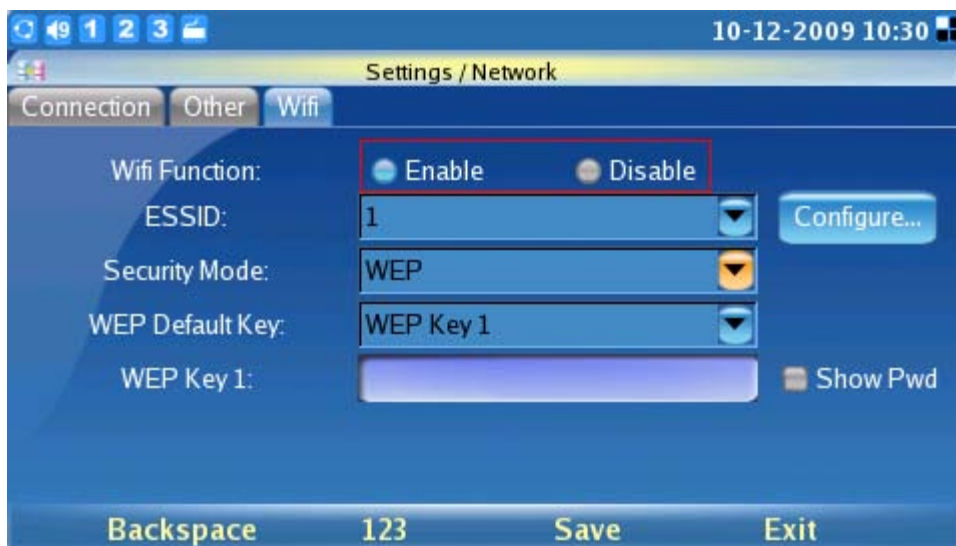


Figure 2-4

Wifi Function: The setting to enable/disable the Wifi functions.

ESSID: The identifying name (ESSID) for the wireless network.

Security Mode: The data encryption method will be based on the security mode.

There are five encryption methods: WEP, WEP PSK TKIP, WEP PSK AES, WEP2 PSK TKIP, WEP2 PSK AES. Configure the security mode based on the settings on your wireless router. If the setting on the wireless router is set to WEP, select WEP and configure the corresponding WEP key set on the router.

Configure: Configure the ESSID of the wireless network. Add/Delete ESSID or scan for available wireless networks.

Key: The key configured for the wireless network, should be corresponding to the key configured on the wireless router.

Show Pwd: If selected, the password will be shown in plain text.

1.2 Hardware Connection

When the Wifi functions is enabled, plug the 802.11n Wifi USB dongle into the USB port on the GXV3140. After 10-15 seconds, when the USB Wifi dongle has successfully connected to the phone, the small icon will be shown on the phone LCD screen (see figure 3-1)

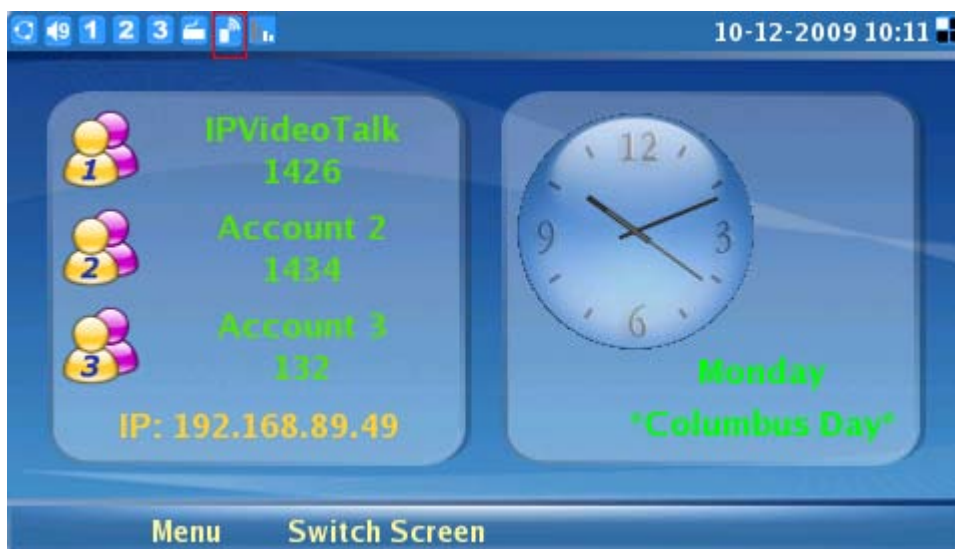




Figure 3-1

1.3 Using the Wifi Dongle

Configure the USB Wifi dongle using the two methods described above. On the GXV3140, select MENU->Settings->Network and use the left/right arrow key to toggle to "Wifi". Select "Configure" to configure the ESSID configuration page (as shown in Figure 4-1). Select "Scan" and press the round Submit button () and the phone will scan and show all the available wireless networks in its range. The ESSID of the network and the signal quality will be displayed. The larger the number is for the signal quality, the better the signal quality is. To add a wireless network, select the ESSID and press the round submit button () or enter the ESSID and select "Add". Select F4 to go back to the setting and the network with the new ESSID should be added (see figure 4-2). After the settings are modified, press F3 to save these settings. If the wireless network is not encrypted by a key, the user should be able to connect to the network in a few seconds.

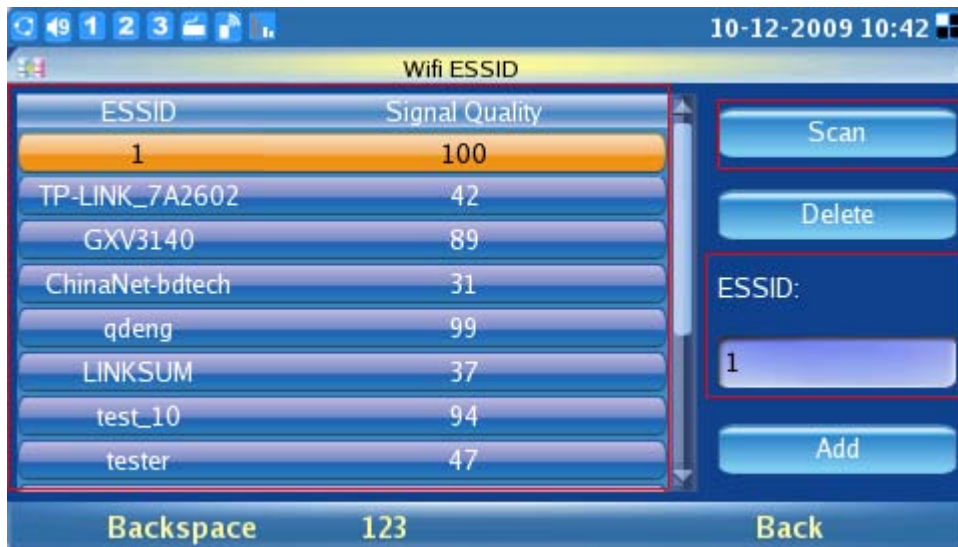


Figure 4-1

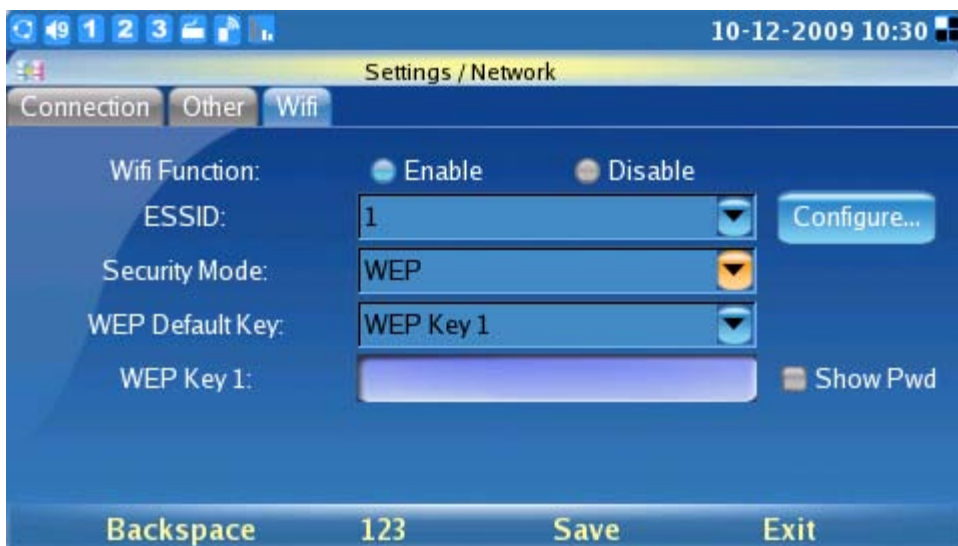


Figure 4-2

FAQ

Q: How do I configure the Key?

A: As shown in figure 4-3, the security mode used when ESSID is 1 is WEP and uses WEP Key 1 as its default key. The user would need to configure the key to be corresponding to the key on the wireless router. For example, if the WEP key set on the wireless router is set to 123456, configure the WEP Key1 to 123456. Press F3 to save the settings. If both the configurations and the key are correct, the user should be able to connect to the Wifi network in a few seconds. Users can also configure the keys from the web configuration interface (see figure 4-4 below).

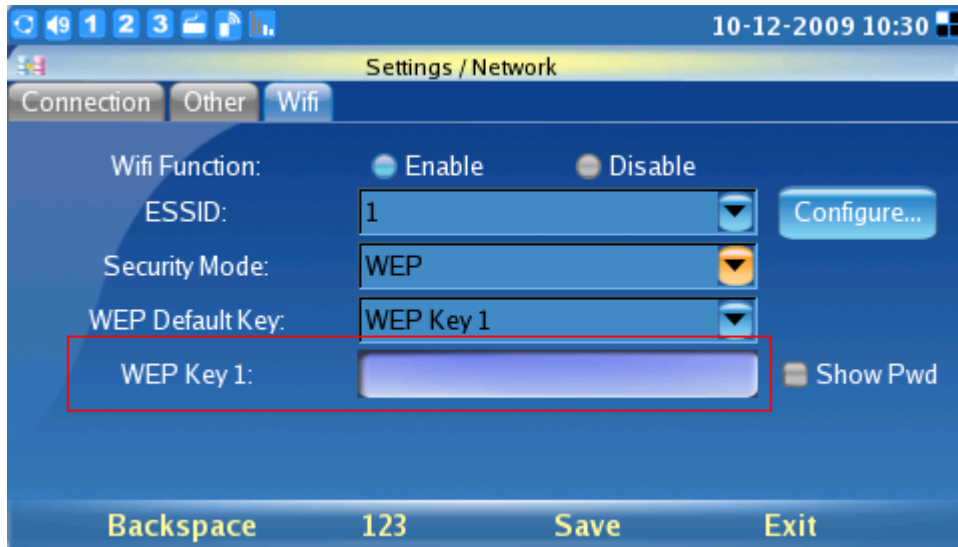


Figure 4-3



Figure 4-4