



DWG 2000D-32G GSM VoIP Gateway

OVERVIEW

Dinstar DWG2000D-32G GSM VoIP Gateway is a multi-functional product used to effectively implement the smooth transition between PLMN (GSM) and VoIP network. The GSM/CDMA VoIP gateway is designed for comfort, ease-of-use to satisfied necessary of customers. It is not only inherits tradition of quality voice communication over IP network but reduce the human resource of VoIP network deployment. It's a cost-effective gateway for call termination (VoIP to GSM) and origination (GSM/CDMA to VoIP). It is fully compatible with leading soft switch and SIP server.

Product pictures




Key benefits

SNTP

- PIN can be modified
- SMS/SMSC/USSD, support API
- Manual /automatic selection operators
- Syslog way output tracking information

- Ping/Tracer on web
- Up to 32 current calls
- BCCH(Lock frequency)
- Compatible with SIMBOX and SIMBANK



Decade focused

Creates the high-quality goods

Voice

- G.711A/U law, G.723.1, G.729A/B
- Silence Suppression & Detection
- Comfort Noise Generation(CNG)
- Voice Activity Detection(VAD)
- Echo Cancellation(G.168)
- Adaptive (Dynamic) Jitter Buffer
- Call Progress Tone Generation
- Programmable Gain Control

SIP Characteristics

- By port registration
- By device registration(share account)
- Support IP trunk and IP trunk group
- Two 183 mode
- Response code switch
- All ports busy, redirected to other device

Mobile Specifications

- Frequency Range: GSM 850/900/1800/1900MHz
- DTMF mode: Signal/RFC2833
- SMS/SMSC/USSD
- Provide API interface
- Call duration limitation
- One/two stage dial-up, Hotline
- Polarity Reversal
- Custom IVR
- PIN modified
- Carrier select
- CLIR
- BCCH



Customer first

Services more intimately

Maintain & Upgrade

- Web based configuration
- Telnet configuration
- Configure backup/restore
- Support English and China language
- Firmware upgrade by TFTP
- Web & telnet login password modify
- Factory reset
- Output CDR/Tracking news by syslog
- Ping and Tracer test on web
- Traffic statistics: TCP,UDP,RTP
- VoIP call statistics
- PSTN call statistics: ASR,ACD,PDD

Physical properties

- Power: 220 VAC
- Power consumption: 80W
- Temperature(operation): 0 °C ~ 45 °C
- (storage): -20 °C ~ 80 °C
- Operation Humidity: 10%-90%
- no condensation
- **Dimension(w/D/H):** 440*330*66mm
- **Weight:** 6.4kg

Network Features

- SIM card slot: 32 GSM channels
- Ethernet Interface: 1 LAN*10/100M Base-Tx RJ45
- Manage Interface: 1 Console RFC2833
- Static IP, PPPoE, DHCP
- Network Protocol Support:
 - IP, TCP, UDP, TFTP, FTP, RTP, RTCP, ARP, RARP, ICMP Ping, NTP, SNMP, Http, DNS
- NAT traversal: Static NAT, STUN
- Static/dynamic ARP request
- Up to 32 routing
- VLAN

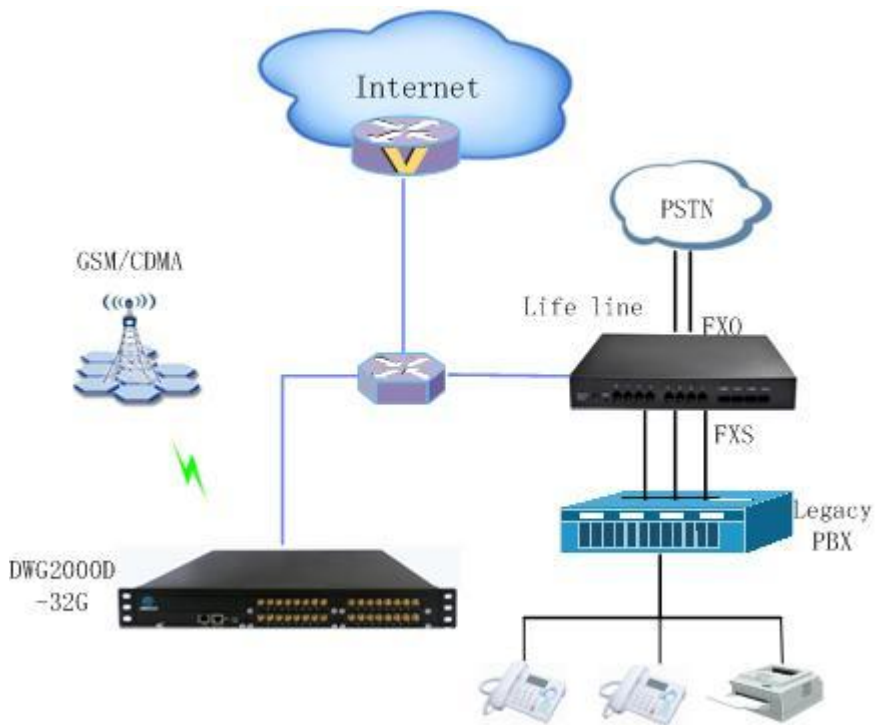
Packing Content

- Gateway
- RJ-45 Network cable
- Antenna



Trust Growth Cooperation Sharing

System Application



DINSTAR Technologies Co., Ltd.

Floor 6, Guoxing Building, Changxing Road, Nanshan District, Shenzhen, China 518052

Tel: +86 755 2645 6664 Fax: +86 755 2645 6659

Email: sales@dinstar.com support@dinstar.com Website: www.dinstar.com

The Gateway to VoIP World