



## DWG 2000B-16G GSM VoIP Gateway

### OVERVIEW

Dinstar DWG2000B-16G GSM VoIP Gateway is a multi-functional product used to effectively implement the smooth transition between PLMN (GSM) and VoIP network. The GSM/CDMA VoIP gateway is designed for comfort, ease-of-use to satisfied necessary of customers. It is not only inherits tradition of quality voice communication over IP network but reduce the human resource of VoIP network deployment. It's a cost-effective gateway for call termination (VoIP to GSM) and origination (GSM/CDMA to VoIP). It is fully compatible with leading soft switch and SIP server.

### Product pictures



### Key benefits

16 GSM channels

LINUX platform

Carrier select

GSM: Quad-band 850/900/1800/1900MHz

PIN modified


SMS sending and receiving

PSTN and VoIP hotline

USSD, open API for SMS

Up to 16 concurrent calls

Flexible dial plan, digit map



Decade focused

Creates the high-quality goods

## Voice

- G.711A/U law, G.723.1, G.729A/B
- Silence Suppression & Detection
- Comfort Noise Generation(CNG)
- Voice Activity Detection(VAD)
- Echo Cancellation(G.168)
- Adaptive (Dynamic) Jitter Buffer
- Call Progress Tone Generation
- Programmable Gain Control

## SIP Characteristics

- By port registration
- By device registration(share account)
- Support IP trunk and IP trunk group
- Two 183 mode
- Response code switch
- All ports busy, redirected to other device

## Mobile Specifications

- Frequency Range:** GSM 850/900/1800/1900MHz
- DTMF mode:** Signal/RFC2833
- SMS/SMSC/USDD
- Provide API interface
- Call duration limitation
- One/two stage dial-up, Hotline
- Polarity Reversal
- Custom IVR
- PIN modified
- Carrier select
- CLIR
- BCCH



Customer first

Services more intimately

## Maintain & Upgrade

- Web based configuration
- Telnet configuration
- Configure backup/restore
- Support English and China language
- Firmware upgrade by TFTP
- Web & telnet login password modify
- Factory reset
- Output CDR/Tracking news by syslog
- Ping and Tracer test on web
- Traffic statistics: TCP,UDP,RTP
- VoIP call statistics
- PSTN call statistics: ASR,ACD,PDD

## Physical properties

- Power: 220 VAC
- Temperature(operation): 0 °C ~ 45 °C
- (storage): -20 °C ~ 80 °C
- Operation Humidity: 10%-90%
- no condensation
- Dimension(w/D/H): 440\*307\*44.5mm
- Weight: 4.2kg

## Network Features

- SIM card slot: 16 GSM channels
- Ethernet Interface: 1 LAN\*10/100M Base-Tx RJ45
- Manage Interface: 1 Console RFC2833
- Static IP, PPPoE, DHCP
- Network Protocol Support:
  - IP,TCP, UDP,TFTP, FTP, RTP, RTCP,
  - ARP,RARP,ICMP Ping, NTP, SNTP, Http, DNS
- NAT traversal: Static NAT, STUN
- Static/dynamic ARP request
- Up to 32 routing
- VLAN

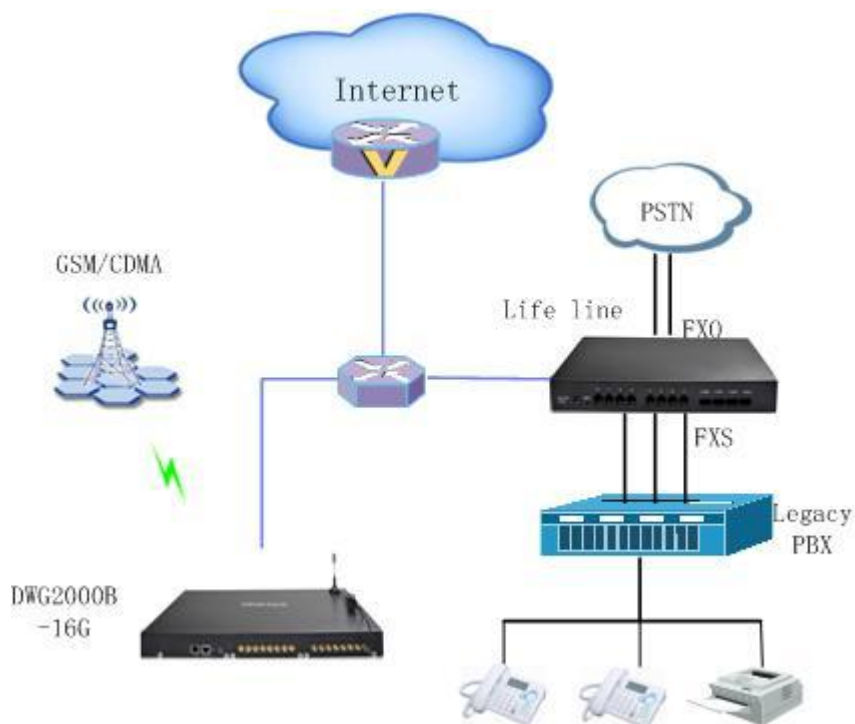
## Packing Content

- Gateway
- RJ-45 Network cable
- Antenna
- User's Manual CD



Trust Growth Cooperation Sharing

## System Application



### **DINSTAR Technologies Co., Ltd.**

Floor 6, Guoxing Building, Changxing Road, Nanshan District, Shenzhen, China 518052

Tel: +86 755 2645 6664 Fax: +86 755 2645 6659

Email: [sales@dinstar.com](mailto:sales@dinstar.com) [support@dinstar.com](mailto:support@dinstar.com) Website: [www.dinstar.com](http://www.dinstar.com)

*The Gateway to VoIP World*

[www.InternetVoipPhone.co.uk](http://www.InternetVoipPhone.co.uk) | [sales@internetvoipphone.co.uk](mailto:sales@internetvoipphone.co.uk) | 0800 088 4846